



Seashell Energy

lessening the fossil, furnishing it green!

Company Profile

Contact Us:

Seashell Energy Co. Ltd.

3, 6th Floor, 3B East Insurance Buildings,
Mahmoud Ibrahim St., Nasr City, Cairo, Egypt

Tel: +20223826042 P.O: 55 Free Zone

Email: info@seashellenergy.com

Website: www.seashellenergy.com



Mr. Osama Asker is a businessman with a Bachelor's degree in Business Administration and a Master's degree in international Relations. He is distinguished by his experience in international relations. Mr. Osama has 15 years of experiences in international business and investment communication, having gained over 20 agencies in a variety of industries.

Message from the CEO

Energy is the cornerstone, the lifeline of a nation's economy. As an Egypt-based international company, Seashell Energy has been committed, since incorporation, to meeting ever growing domestic demand for energy. Over the years, Seashell Energy has given full play to its advantages in logistics and supply, drilling and geoservices, petroleum operations and corporate governance to acquire oil and gas resources and develop jointly with partners upside potential. The Company has also been active in the renewable energy sector. As the outcome of constant and strenuous effort, Seashell Energy has achieved rapid growth; meanwhile, it has assembled a complete industry chain, ranging from E&P, to geothermal energy exploration, to international trading, to logistics, and to operation. Looking toward to the future, Seashell Energy will stay based in Egypt but keep a global perspective in pursuing mutually beneficial cooperation, sharing with partners in the benefits of development and working together for a better future.

Osama Asker, CEO

Profile Overview

Introduction

Vision and Mission

Why Seashell Energy

Logistics & Supply Services

Construction & Civil works

Maintenance Services

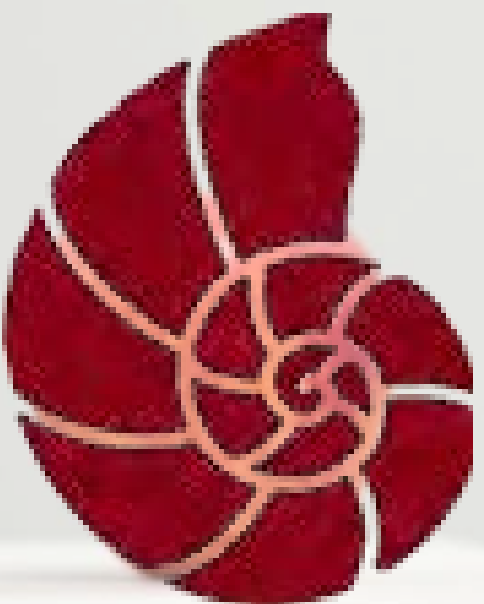
Drilling & Geoservices

Consultancy Services

Mining Services

Green Energy

QHSE Services



Seashell Energy Ltd.

Is a subsidiary company of
YEMENOSCO Group, Located in Egypt.

Introduction



Seashell Energy Ltd. is a professional company that is located in Cairo, Egypt offering supplies and consultancy services to the Downstream and Upstream sectors in Egypt and Overseas.

Seashell Energy Ltd. Was founded as a subsidiary company of **YEMENOSCO Group**, and its partnership with several international companies engaged in hydrocarbon, Mining, minerals sector, supplies & consultancy services. Through our network of local associates and international partners companies we emphasize local experience combined with a global knowledge-base. We managed to draw expertise in a wide range of various Oil & Gas disciplines such as design, engineering, management, development, environmental, supplies Etc.. to provide a comprehensive suite of hydrocarbon services.

Seashell Energy Ltd. have also an innovated strategy in exploration for geothermal resources, geothermal modelling, geothermal drilling, and utilization of geothermal energy.

Seashell Energy Ltd. is a truly people-based organization, we believe that the key to our success lies with the motivation, skills and commitment of our employees. We can go beyond any probability to make things happen.

We provide entrepreneurial services like consulting, industrial supplies. We develop business plans, identify allies and contact potential partners.



Vision and Mission



Vision

To be recognized as a Company and partner of choice in the Arabian Peninsula and the Middle East oil and gas industry for delivering on our promises, pioneering new opportunities and approaches and bringing value to our industry, shareholders and community.

Mission

To make long-term difference in our industry and earn the trust of our partners and shareholders.

To keep going our great passion for what we do that come through in every area of our business. We are confident, committed and open minded, which enables us to pioneer new and better solutions and approaches

Service Quality Policy

Service quality is our main priority business. We take pride in providing safe, quality services to the energy industry.

We take pride in providing safe, quality services to the energy industry, and we are focused on consistently and effectively identifying and meeting the needs of our clients.

A thorough understanding of our customers, their processes, and their problems is key to our accurate and thoughtful problem solving and effective and efficient service delivery.

Seashell Energy Ltd. shall offer properly engineered, high quality services to its clients. Personnel with a high level of expertise and practical experience will deliver services to the highest industry standards.



Why Seashell Energy?



Exceed customer expectations for value, innovation, and excellence.

Strong partnerships with all of our clients, partners, stakeholders, co-workers, shareholders, and community.

Increase the well-being of all of our stakeholders.

Operate with uncompromising integrity, and provide entrepreneurial services like consulting, industrial supplies.

WHY CHOOSE US?



Logistics & Supply Services



A- Materials Supplying

- All Electrical & Instrumentation
- All Pipes & Fittings
- Valves & Metering
- Pumps & Compressors
- Chemicals supplies
- Safety Tools
- Monitoring Systems



B- Equipment Rental

- Heavy equipment & vehicles types
- Water/Fuel supply trucks
- Water/Fuel storage Tanks
- Diesel generators
- Welding Machines



C- Transportation Services

- Heavy Transportation from port to site
- Transportation between locations
- Light Transportation & rental cars
- People transportation



D- Accommodation & Catering

- Base & Fly Camp Rooms & Tents
- Catering Services
- Housekeeping
- Laundry
- Recreation
- Balneotherapy
- Geotourism



E- Customers Services

- Manpower
- Public relations with local people
- Custom Clearance
- Travel bookings
- Hosting
- Shipping & Handling



Construction & Civil Works



A- Civil Works

- Site Preparations.
- Site Leveling & Compaction.
- Earth Works.
- Sewage Systems Construction.
- Roads Construction & Maintenance.
- Concrete foundations.
- Buildings including rooms.
- Fences & Steel Buildings.

B- Construction Facilities

- Engineering & Construction.
- Tanks Engineering & Construction.
- Early Production Facilities
- Equipment's supply and install.
- Gas Compressors Supply and install.
- Motor Control Centers.
- Produced Water Injection Pump.
- Welding works.
- Electrician works.
- Pipeline Engineering and Construction.
- Pump station supply and install.



Maintenance Services



Maintenance of a safe working environment include communication of the company's safety policies

- Pipes, Tanks Cleaning & Paint.
- Pipeline Maintenance.
- Chemicals Treatment.
- Controls Systems & Panels Maintenance.
- Calibration



Drilling & Geoservices



A- Water Wells & Geotechnical

- Drilling of all types of water wells
- Supply & run all types of water wells casing
- Soil Test Drilling
- Geotechnical Reports
- Mining Drilling

B- Oil & Gas Wells Drilling

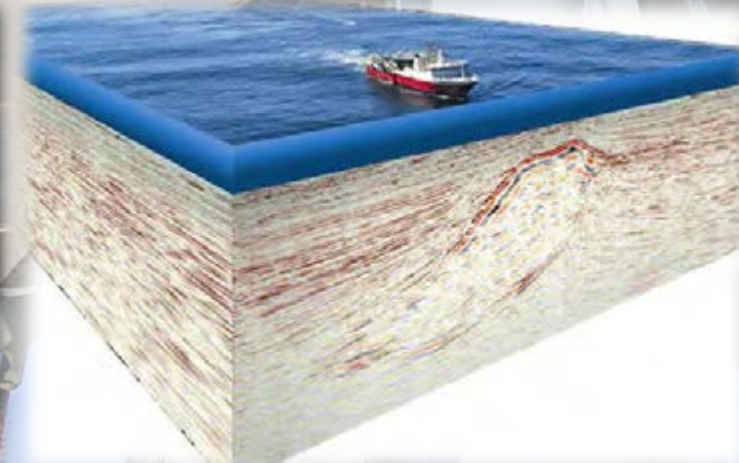
- Drilling Rigs
- Drilling Mud Services
- Directional Drilling
- Logistic & Supply

C- Seismic Services

- Seismic Data Acquisitions
- Seismic Data Processing

D- Well Services

- Well Tests.
- Coiled Tubing.
- Fracturing Pumper





Seashell Energy is an agent for Kerui in Egypt

- KERUI Petroleum & Gas is an international comprehensive industrial group committed to making the extraction of oil and gas more efficient, providing customers one-stop solutions including R&D of high-end oil and gas equipment, oil and gas energy engineering and oil field integration services, industry + internet platform services. Taking the full advantages of equipment, technology, services, talents and platforms, and multi-field business models development, KERUI Petroleum & Gas is upgrading from solutions providing to a win-win eco-industrial chain



Kerui Products

A- Drilling Equipment Series

B- Well Head & Well Control Equipment Series



Conventional Land Drilling Rig

- 750HP/1700kN
- 1000HP/2250kN
- 1500HP/3150kN
- 2000HP/4500kN
- 3000hp/6750kN



Truck Mounted Drilling & Workover Rig

- 150HP/500kN-450HP...
- 550HP/1350kN-1000...
- Truck-Mounted Work...



Special-type Drilling Rig

- Training Drilling Rig
- Arctic Drilling Rig
- Fast Moving Drilling ...
- Cluster Well Drilling ...
- Slant Drilling Rig
- Hydraulic Drilling Rig
- Super Single Drilling ...
- Slant Workover Rig



Main part of drilling rig and associated equipment

- Mast
- Substructure
- Crown Block
- Travelling Block
- Drawworks
- Rotary Table
- Power Catwalk
- Racking Platform Pipe
- Drilling Rig Electrical ...
- Driller Console Cabin
- Drilling Instrument S...
- Solid Control Systems



Drill Pipes

- Drill Pipes
- Heavy Weight Drill Pi...



Wellhead Equipment

- Scw conventional well...
- The Modular Wellhea...
- The Multipartite Mod...
- Geothermal wellhead...



Christmas tree

- Christmas Tree
- Block Tree



Valve

- WEFIC-C Slab Gate v...
- WEFIC-S Slab gate va...
- WEFIC-M Expanding ...
- WEFIC-SR Gate Valve
- WEFIC-CH Check Valve
- WEFIC-CV Choke Valve
- WEFIC-SSV Safety Val...



BOP

- Annular Bop
- Control System For B...
- RAM BOP



Wellhead Control Panel

- Wellhead Control Pa...

Kerui Products

C- Oil & Gas Processing Equipment Series



Oil and Gas Separation and Metering Equipment

- » Skid-mounted meter ... » Skid-mounted filter s... » Skid-mounted gas m... » Skid-mounted high e...
- » Skid-mounted heatin...



Natural Gas Processing Equipment

- » Skid-mounted absor... » Skid-mounted memb... » Skid-mounted solid a... » TEG dehydration skid...
- » Skid-mounted molec... » Skid-mounted gas liq... » Skid-mounted gas de...



Oil and Gas Gathering and Transportation of Special Equipment

- » Skid-mounted water j... » Skid-mounted chemi...



General Equipment

- » General Equipment

D- Gas Compression Equipment Series



Reciprocating Compressor Unit

- » Reciprocating Compr...



Centrifugal Compressor Unit

- » Centrifugal compress...



Screw Compressor Unit

- » Screw compressor unit



Generator Unit

- » Generator unit



CNG

- » CNG

E- Oil & Gas Stimulation Equipment Series



Fracturing Spread

- » Fracturing Pumper » Blender » Data Van » Fracturing Manifold...



Coiled Tubing Unit

- » Truck Mounted Coile... » Trailer Mounted Coil... » Skid Mounted Coiled...



Nitrogen Generation Unit

- » Offshore Skid Mount... » Onshore Skid Mount... » Onshore Truck Moun... » Alpine Membrane Se...
- » High Temperature Ni... » Pressure Swing Adsor...



Liquid Nitrogen Pumper

- » Liquid Nitrogen Pum...



Cementing Unit

- » Single Pump Cement... » Dual Pump Cementin...



Fracturing Pump, Cementing Pump

- » KB2800W Fracturing ... » KB2500W Fracturing ... » KB2250W Fracturing ... » KB1000W Fracturing ...
- » KB600SW Cementing...

Seashell Energy has a partnership with Discovery Oil Services



- The portfolio of Discovery includes manufacturers, engineering consultancy, fabrication and contractors, specialized process technologies, chemical, equipment, instrument and material supply and other professional service companies mainly rendering their specialties to the upstream and downstream oil and gas sector.
- Over the years, Discovery Oil has provided top quality products and services to its customers, coupled with its readiness to adapt and meet the changing market requirements, Discovery Oil has achieved local oil & gas market leadership and expanded our services to include energy related sectors and other selected industrial organizations whilst maintaining a high level of customer satisfaction.

- Discovery Oil Services has a dedicated freezone area in Ataka, Suez, Egypt for efficient & rapid shipping, equipment maintenance & Delivery of our services.

Fields of Services of Discovery Oil Services company:

- 1- Artificial Lifting Systems**
- 2- Production Logging**
- 3- Drilling & Completion**
- 4. Chemicals Supply**
- 5. Advanced EOR Technologies**
- 6. Tank Cleaning**

Fields of Services of Discovery Oil Services company:



Artificial Lifting Systems

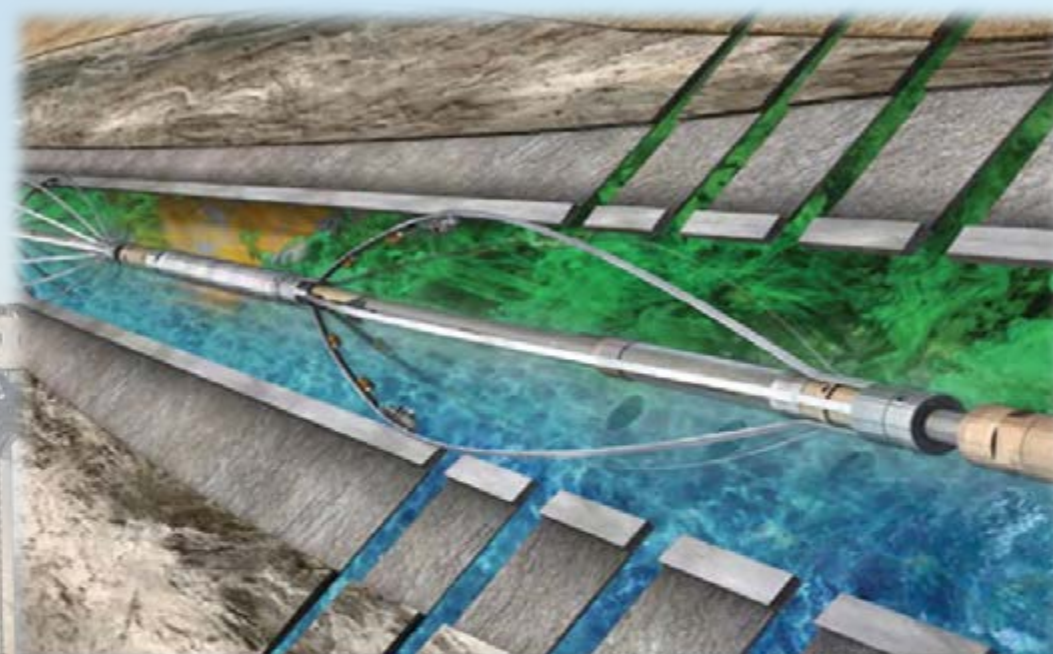
Discovery has vast proven experiences in the field of Sucker Rod Pumps whether supplying different varieties of manufacturers & origins or supporting our clients with our professional installation & maintenance services.

We supply top notch third party certified equipment & tools designed & selected based on our client's operation & requirements for optimum production & reliability.

Production Logging

Most of artificially produced wells has no Y-tool or dual wellhead (dual string) completion.

Therefore, it is not possible to perform Production Logging in such wells, once pump is out of the wells, well obviously can't produce during PLT.





Drilling & Completion

In cooperation with Volgaburmash, JSC, and Uralburmash, JSC, the largest Russian manufacturers of advanced high-quality rock-cutting tools for oil & gas, mining, and construction industries. The Companies manufacture over 1000 roller cone



Chemicals Supply

In cooperation with production Chemicals, an independent Group of Companies which specializes in providing specialty Treating Chemicals Engineering Services to Oil and Gas producing companies, Refineries, Oil Marketing, Power generation companies and water treatment industries.





Advanced EOR Technologies

In partnership with Terratec Global, the leading scientific based company in pulsation & advanced EOR technology, we're capable of offering our clients the most efficient & advanced technologies & solutions for maximum oil recovery & reservoir performance.



Tank Cleaning

SRS process is Chemical – Mechanical process to clean storage tank with “No Man Entry to recover 90%-95% hydrocarbons from the residue at the bottom of storage tanks. Using “Closed loop Method” in which the media used for cleaning the tank, runs in closed circuits that circulates Oil / Sludge, with addition of Chemicals through injection nozzles designed to fit floating roof legs. This greatly benefits the environment as no emissions escape to the atmosphere and no spill out of crude oil at the tank premises and in the tank farm – Operators never get in contact with media inside the tank and consequently, have less contact with toxic and flammable liquids makes it the safest tank cleaning system.



Seashell Energy also has a partnership with Poss professional oil services and supplies

POSS
Professional Oil Services & Supplies



POSS was established in 1998 as private Petroleum Services Company mainly active in the provision of oil and gas wells down hole equipment services, casing services, technical support services, consultation services and oilfield supplies through its multi-national principals. POSS is registered on the approved vendors list of the Egyptian General Petroleum Corporation since 1998. POSS developed its Quality Management System in compliance with ISO 9001:2008 requirements.

Provision of oil and gas solutions to customers through superior technology, field-proven equipment and exceptional HSE standards, is POSS target.

Oil field supply companies are only dedicated to provide products and services, whereas, POSS is committed to being the "Supplier of Choice" through product and service quality that meet our customer's requirements and their expectations.

Services provided by POSS include and are not limited to Consultation services, Down hole equipment services, Casing services, Welding services, Technical support services, External casing multi-cut and DPD services.

Supplies of well cement class G, steel fabrication, API thread compound, and Centralizers are main oil field supplies by POSS. POSS strives for uncompromising quality, which is applied to all supplies



Consultancy Services



Downstream Services

- In cooperation with our local and the global project team. Seashell Energy Ltd. Downstream delivers wide range of consultancy services to the oil and gas industry.
- Our Downstream consultancy services cover the entire offshore and onshore industry; production, treatment, storage and transmission of oil and gas.
- As a knowledge-based company, our most important asset is human resources and our know-how. In addition to our worldwide network of multidisciplinary expertise we currently employ some 21 highly qualified oil and gas local specialists that together form a strong multi-disciplinary team comprised of senior engineers with years of valuable experience and young minds with innovative courage.
- We deliver a broad range of services to a variety of both land-based industries including the manufacturing, mining and chemical industries, and offshore industries such as oil, gas and wind energy.
- We can supply consultancy services throughout every phase of onshore projects from permitting procedures, procurement, concept studies, design, supervision, testing and commissioning to project management

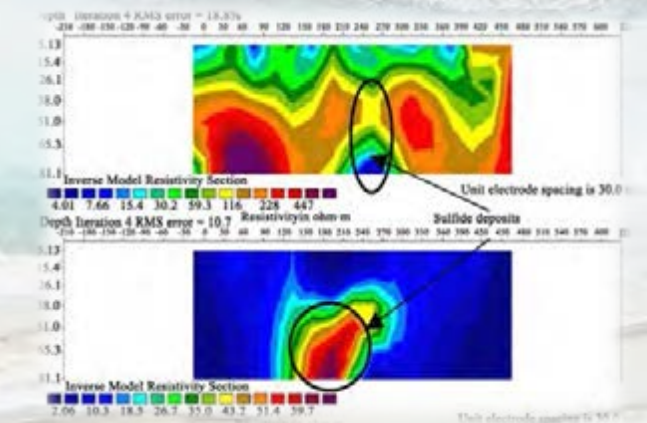
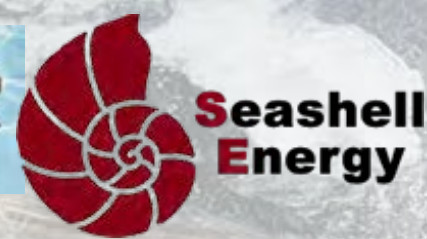


Mining

We are the agent of TDS in Egypt

TDS provides teams of expert geologist, geophysicists, and professional engineers locally and internationally in the exploration of minerals and the opening and development of mines and quarries:

- **Consulting services**
- **Geological exploration services:**
 - Geological surveys, geological mapping, and Microscopic mineral studies
- **Geophysical exploration services:**
 - Electrical, Seismic refraction, Electromagnetic, Gravity, and Magnetic methods
- **Topographical surveying**
- **Surveying for mines and quarries**
- **Mining detectors:**
 - Gamma Ray Spectrometer and Chemical Elements Detector



Mining



Partners of TDS:



TLM Hydropuls GmbH



MTC



We are also the agent of Windfall Geotek

- Simply put, the way new discoveries are found, the way resource targets are proposed and even the way mine development and operations are run are antiquated and effectively unsustainable in today's world.
- Financing the resource sector is complex. The backdrop of economic and environmental responsibility costs is constantly increasing. The days of greenfield prospecting are simply too risky and sources of capital seek smarter investment options.
- Faced with these realities, Windfall Geotek offers a better way. Applied use of artificial intelligence (AI) to achieve what old school methods simply can't offer: Much higher certainty of success – thereby saving initial costs and setting the stage for higher rewards.

Artificial Intelligence has seen massive and rapid development through extraordinary advancements of various neural platforms commonly referred to as Machine Learning.

Machine Learning allows for the evaluation of bigger portions of information.

Windfall Geotek is using AI and Machine Learning aim to help Junior mining companies

A graphic with a black background and white text. It features a stylized tree-like structure of circuit lines. The text reads: "THE AI MARKET IS DEVELOPING ON THE GROWTH OF BIG DATA".

THE AI MARKET IS
DEVELOPING ON THE
GROWTH OF BIG DATA



The Windfall Geotek System

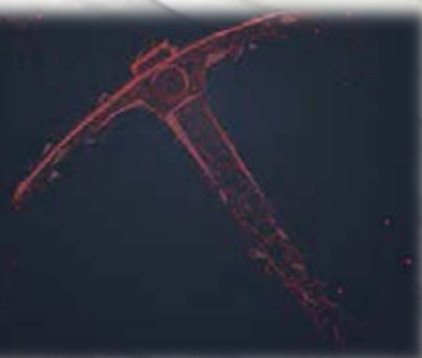
- Our system is called CARDS (Computer Aided Resource Detection System) and by implementing this technology, near-immediate savings of 3-5% on exploration and development are attainable.
- Enhanced drill target accuracy by itself reduces write-offs and wastage, providing additional downstream savings.
- An integrated ability to predict related variables (i.e. changes in mineral market value, equipment depreciation and repair cost milestones, insurance, human resource and regulatory changes) are just some of the related and meaningful AI data sets available to influence bottom-line performance.
- Most importantly, where the project attributes warrant, Windfall Geotek may elect to participate to aid financing and investment support as a partner. We believe integrated support is a practical demonstration of confidence and means to self-fund growth.



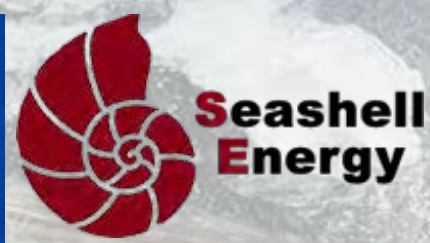
WINDFALL GEOTEK

AI Transforms the
Resource Sector

TSX.V: AIIM



Mining



Core Drill Rigs

- We provide different models of core drill rigs used in mining supplied by Kerui



HCR-8型



HYDX-2型

Green Energy



A- Geothermal Energy

While fossil fuels are depleting, we are harnessing the energy just beneath our feet!

- We are one of the early bird geothermal explorers in Egypt and the Middle east, just because we appreciate the importance and the promising future of such green, renewable (24/7) energy.
- We have an innovated strategy in exploration for geothermal resources either hydrothermal or petrothermal (hot dry rock), geothermal modelling, geothermal drilling, and utilization of geothermal energy.



Geothermal Energy

A- Geothermal Exploration

- Geophysical techniques
- Geologic studies

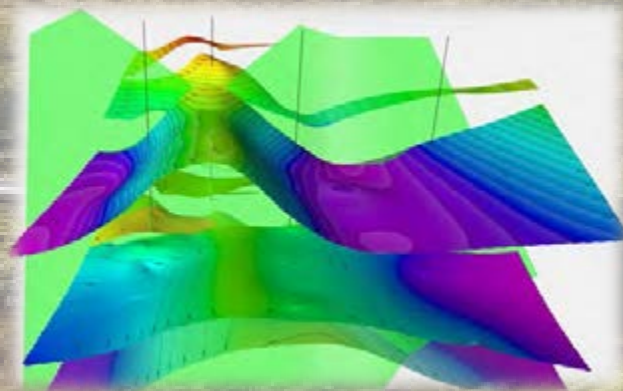
Our geologic team integrate different approaches and disciplines to model geothermal systems

B- Geothermal drilling

- Drilling of different types of geothermal wells with different depths.
- Make use of dry oil wells that produce hot water

3- Geothermal energy utilization

- Consultations and execution of different direct uses (greenhouses/ geothermal spas/ aquacultures etc.) as well as power generation.
- Different up to date technologies in electric power generation from geothermal energy.



Green Energy

B- Waste To Energy

Together with our partner nt (Norwegian technology) we are managing the waste and turning it to Energy!

- Norwegian Technology AS provides services for the development of sustainable waste treatment solutions for offshore and onshore industry and municipal applications using proprietary treatment technologies, equipment and chemicals.
- Solutions to meet more stringent regulations and political/public expectations
- Cost saving and environmental protection initiatives.
- Unique and proven technologies for treatment and disposal of environmentally unfriendly waste products:
 - Oil & gas waste streams with applications for slop, mud and cuttings
 - Oily port waste with applications for bio-reactor
 - Treatment of municipal waste



Technologies for the global green economy

- Value creation by changing and improving from traditional inefficient treatment technologies, equipment and chemicals including methods.
- Compact treatment unit and environmentally friendly chemicals for the treatment and re-use of fracking wastewater, completion fluids, produced water and any other industrial wastewater.
- Environmentally friendly chemicals to destabilise the drilling fluids, oil-based mud and water-based mud allowing for the gravitational separation of the three different main elements water/brine, oil and solids.
- Chemical solutions to treat completion fluids onsite for re-use.
- Treatment offsite and onsite and disposal of polluted wastewater.

Norwegian Technology



Water

Our most abundant natural resource and the most badly managed, water is the lifeblood of business, society and our economy.

Norwegian Technology AS is where the sustainable management of the water resources becomes a living imperative shaping business and public policy.



Treatment of wastewater and drilling fluids

Norwegian Technology AS provides services and supplies environmentally friendly chemicals to Waste Water Treatment Plants (WWTPs).

The company provides state of the art compact mechanical separation equipment and supplies environmentally friendly chemicals for the treatment (onsite and offsite) of flowback fluids, completion fluids, produced waters and any other industrial water.

Norwegian Technology AS provides services (onsite and offsite) and supplies environmentally friendly chemicals to destabilise the drilling fluids, oil-based mud (OBM) and water-based mud (WBM), allowing for the separation of the three main elements, i.e. water/brine, oil and solids.

Technology & Innovation

The pace of technological innovation has accelerated almost beyond comprehension. Leading companies are using new and more energy efficient technologies to innovate across product lifecycles and to 'future proof' their brands.

Norwegian Technology AS is a company where inspiration for change is rendered.

Norwegian Technology



Efficiently converting hazardous waste into valuable products
A major technological breakthrough

Wastewater Treatment Unit

The Wastewater Treatment Unit (WTU) is the most compact and efficient solution for the treatment of wastewater both offshore and onshore. The WTU employs dissolved air flotation in combination with ceramic membranes to process complex industrial wastewaters.

The WTU is built on a frame for indoor installation or into a 5 ft container to operate outdoor, offshore and onshore.

The WTU reduces the oil in water (OIW) to less than 1 ppm in the case of slop water from Oil based mud (OBM) drilling.

The WTU separates the heavy metals, dissolved and suspended, from the wastewater (the degree of separation depending on the chemicals dosage). Thus, it separates more than 99% of the suspended solids. The WTU reduces the turbidity to less than 10 NTU* depending on the chemicals dosage.

*Nephelometric Turbidity Unit

Applications:

- Produced water
- Flowback fluids
- Slops
- Completion fluids
- Industrial wastewaters
- Closed drain and wash treatment by means of decanter centrifuge



Chemicals for the treatment of Oily Sludge

Oily sludge is one of the most significant solid waste generated in the petroleum industry. It is a complex emulsion of various petroleum hydrocarbons, water, heavy metals, and solid particles.

The solution offered by Norwegian Technology AS for treatment of oily sludge allows for the separation and recovery for re-use of the different components of the sludge, namely oil, water and solids. The process takes place at room temperature with the use of proprietary chemicals.

Norwegian Technology AS provides also the most technologically advanced mobile separation equipment and the operators to carry out the sludge treatment.

Lab tests

Norwegian Technology AS conducts lab tests in order to accurately identify the most appropriate chemicals, to optimize their dosing, to evaluate the reaction time at ambient temperature and, last but not the least, to draw a technical proposal highlighting the consequent cost savings for the Customer.

Project development:

- Chemicals and dosing pump mobilization.
- If settling tanks are not present, installation of inline mixer and decanter.
- Mixing of the chemicals.
- Sedimentation in gravity settling tanks or solids separation by means of decanter centrifuge.



Norwegian Technology

Chemicals for the treatment of Oil-Based Mud and Low-Solids Oil-Based Completion Fluids

Oil-based fluids (OBF) in use today are composed of oil as the continuous phase and water as the dispersed phase in conjunction with emulsifiers, wetting agents and gellants.

The Base Oil can be diesel, kerosene, fuel oil, selected crude oil or mineral oil. The water can be freshwater, or a solution of sodium or calcium chloride.

The Oil Water Ratio (OWR) represents the relationship between Base Oil and Water in the drilling fluid. OWR is the ratio between the percent oil in liquid phase and the percent water in liquid phase.

This figure is very important since it tells us how much water is present in the mud.

While the mud circulates in the borehole, the water to oil ratio and the ultrafine solids content of the OBF increase. In order to return the mud to the mud system the excess water and the ultrafine solids must be separated from the mud.

For that, Norwegian Technology AS has developed chemical additives and services for the destabilization of the OBFs, allowing for the separation and recovery for re-use of three different elements: oil, water/brine and sludge (solids).

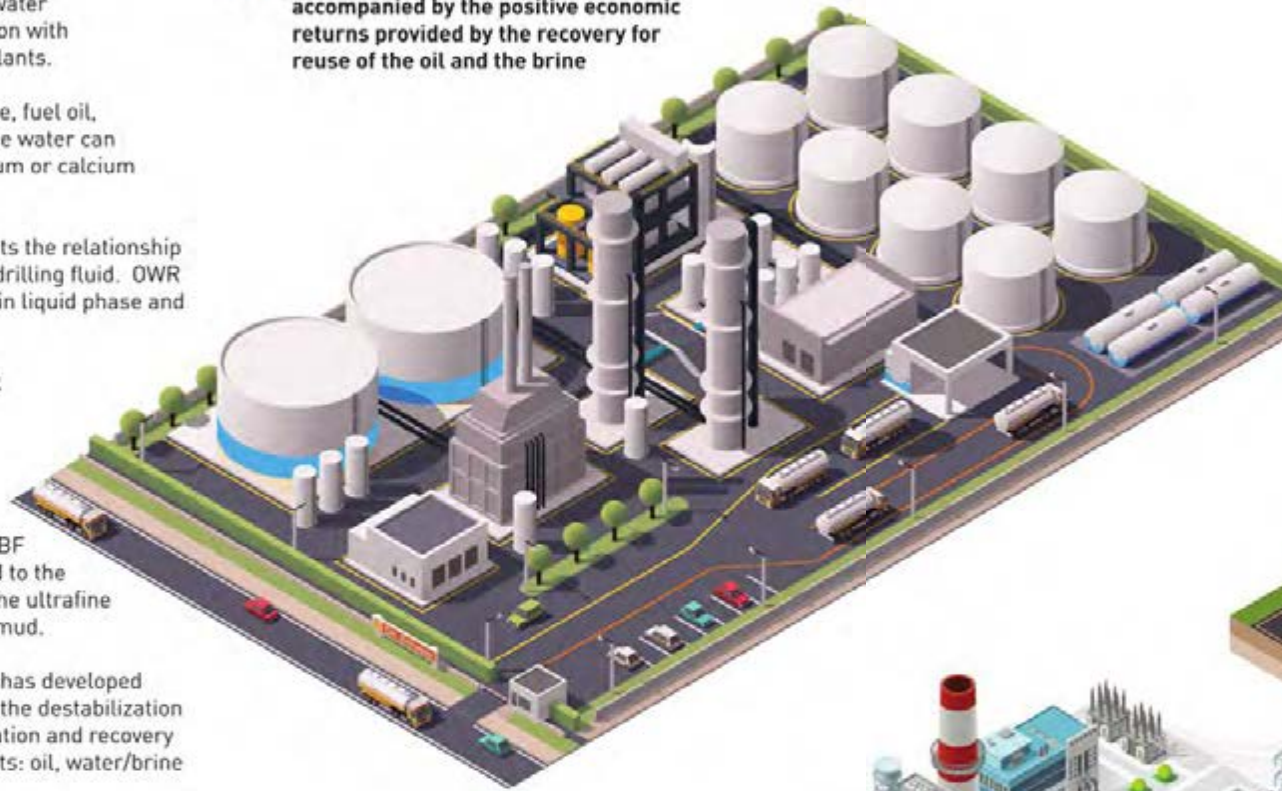
The effectiveness of the treatment is accompanied by the positive economic returns provided by the recovery for re-use of the oil and the brine.

Norwegian Technology AS provides the most technologically advanced mobile separation equipment and the operators to carry out the onsite treatment operations.

☞ **The effectiveness of the treatment is accompanied by the positive economic returns provided by the recovery for reuse of the oil and the brine**

**Scalable.
Flexible. Connectable.**

The equipment delivered by Norwegian Technology AS is scalable and easily connected with the sludge treatment unit or a desalination unit. The oily sludge unit is used for the treatment of OBM, WBM and tank bottom sludge. Desalination units are employed to separate Total Dissolved Solids (TDS) and divalent ions.



- The assessments ensure that the environmental and social implications of a project are taken into account before the final decisions are made. Images
- At Seashell Energy, we have an environmental assessment department which specializes in offshore and onshore environmental projects.



Health &
Safety

Consultancy through all stages

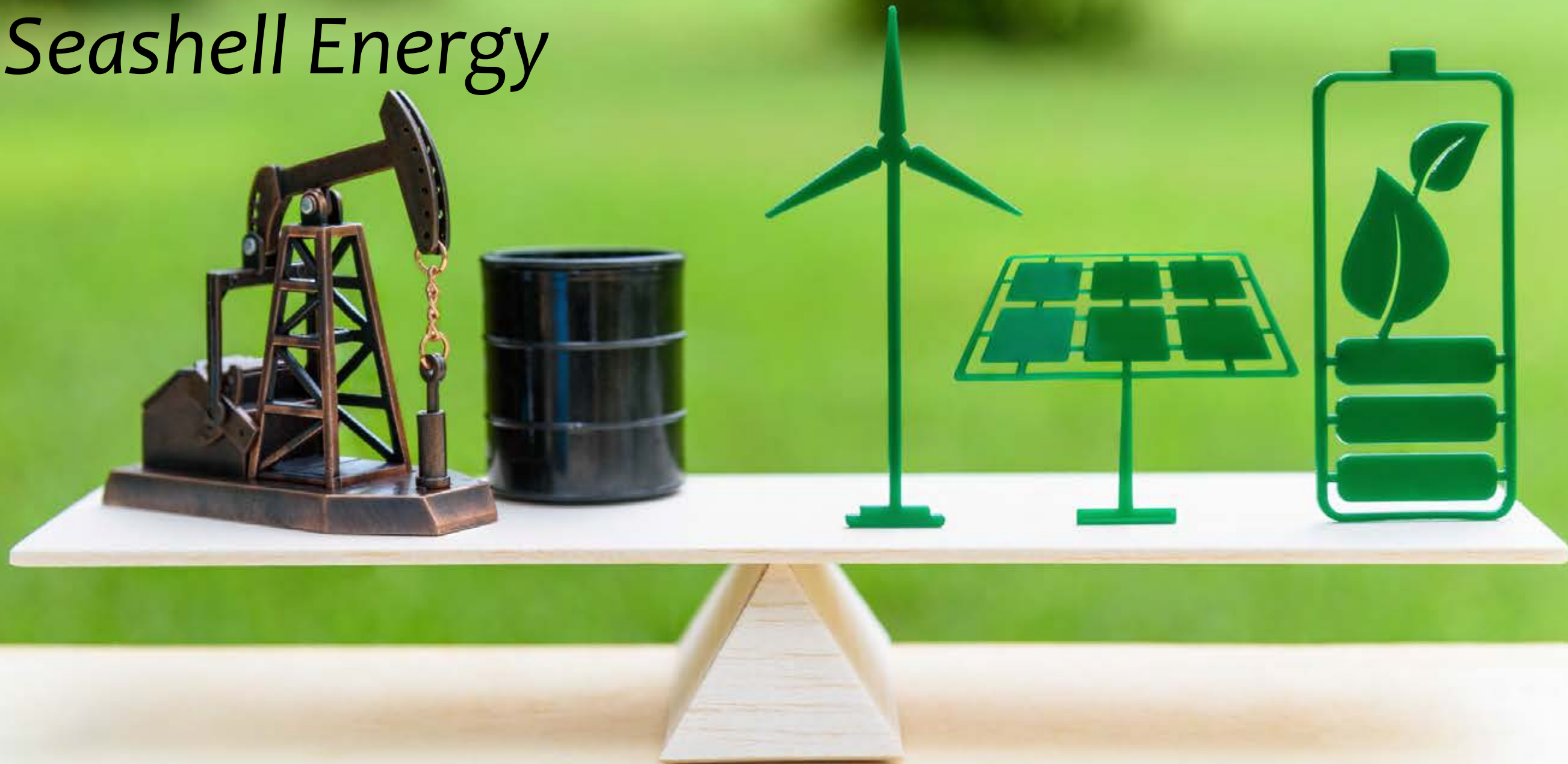
- Seashell Energy Ltd. provides environmental consultancy services at all stages of Oil & Gas projects: from conceptual and FEED studies to decommissioning.
- We have the expertise and equipment to perform chemical, biological and physical monitoring as well as HSE assessments.
- Authority management, environmental legislation and permitting processes are among our specialist services.



SeaShell Agencies & Partners



Seashell Energy



lessening the fossil, furnishing it green!